



3

Officers and Committee - 2018

President: Roger Lewis

Chairman: Anthony Waldbaum

Vice Chairman: Evi Trickey

Gen. Secretary Jenny Arnold

Hon. Treasurer Bob Sleeman
Hilmarton, 50 Northampton Road, Croydon.
CRO 7HT
Tel: (020) 8654 5814

Hon. Auditor Dick Allen

Committee Members:

Neil Collins
Dianne Gilmour
Teresa Hoy
Claire Murthy
Raymond Ore
Philip Sadler
Jessica Saraga

Also

Website entries Raymond Ore
Hire of Hooks Bob Sleeman
DVDs : Ken Head
Refreshments : Currently vacant
Website: Raymond Ore
<http://www.croydonartsociety.org.uk>

Welcome



With the year drawn to a close and new one on our doorstep, I welcome you to this Winter 2018 edition of the CAS newsletter. As we gather ourselves after the festive season, perhaps take a moment out of your busy day to read about some of the latest news and to catch up on some details of the year ahead, and may I also take this opportunity to wish you a very happy 2019.

Editorial

Whether it's due to the dire financial climate, changes in public demand, general lack of time or interest, the internet, Brexit, or a myriad of other possible factors, it seems that art sales in the general market are, on the whole, very difficult to achieve.

This inevitably causes us artists to start to question. Our thoughts turn to searching for causes and solutions; Is it my subject matter? Is my style wrong? Is it the prices I'm asking? All of these are valid questions but exploring further they seem to divide between those things we have no control over at all or those things that we might change but perhaps would be unwilling to. For instance, I'm pretty sure it wouldn't be right or beneficial to seek drastically to change our particular painting style, holding as it does, our unique signature. And would it really be a formula for success to try to work outside of those subjects that most inspire us? It's also a thin line between being encouraged by the work of any (bestselling) artist who may inspire and amaze us, and subsequently being unduly influenced by their work in our own processes, But on the other hand we are only human and will inevitably be influenced by what we see, learn and appreciate.

All this seems to recommend the excellent programme of Monday evening events prepared for the coming year. They have been carefully planned to help inspire, to teach and to practice. So please come along, it will be lovely to see you. And I'm sure it will benefit us all in helping us to improve our art and perhaps to enhance picture sales at our upcoming exhibitions, all this hopefully without us having to sell our artistic souls to the devil.

Phil Sadler

NEWS OF MEMBERS

New Members

Two applicants submitted their work for selection during the last part of 2018. We were pleased to extend a warm welcome to Loren Dixon and Hugo Reid Scott, who were both offered membership.

Sky Arts 'Landscape Artist of the Year'

Congratulations to Yellon Ran Huang for participating in the heats of Sky Arts 'Landscape Artist of the Year' back in the autumn. The competition involved a very challenging day of painting on the beach.

Review of 129th Annual Clocktower Exhibition

The *Inside Croydon's* Web-Log's art Critic Ken Towl gave an excellent review of the CAS Annual Exhibition this year which was posted to the Blog in November. The article includes mention of the opening by the Mayor and highlights many of our Artworks with a hearty endorsement. The Article was great publicity for the Society and came after we were designated Art Club of the Year by 'The Artist' and 'Leisure Painter' magazines. The article can be viewed on the blog by visiting <https://insidecroydon.com/>.

More about the exhibition later but many congratulations to everyone for creating such an impressive range of artwork.

Dates for your Diary

Spring Exhibition – Croydon Clocktower: Tuesday 30th April to Saturday 18th May 2019.

Denbies Wine Estate – Dorking :2nd to 15th September 2019

130th Annual Exhibition - Croydon Clocktower
Tuesday 19th November to Saturday 7th December 2019

Warlingham Art Group

If you or anybody you know enjoys painting in the company of other like-minded people, then you would be very welcome to come along to Warlingham Village Hall any Tuesday morning about 11.00am to meet us for a cup of coffee and to see if you would like to join us.

Further information from

Joan Aeschlimann: tel.01883 624 330

EXHIBITIONS

Lingfield Art Exhibition

The Croydon Art Society were once again well represented in the Lingfield Art Associations' Annual exhibition which this year took place in October 2018

Chelsea Art Exhibition

Many Croydon Art Society members travelled up to the Kings Road Chelsea on Monday 22nd October to submit works for the Chelsea Art Society's Open Art Exhibition 2018, which took place in the Old Chelsea Town Hall between 25th and 29th October. Competition for acceptance was high and so many congratulations go to Ken Head and Margaret Eggleton who had works accepted for display.

"Draw 18" SGFA Centenary Exhibition

Between 21 October and 1 November 2018, the Society of Graphics Fine Art held their 97th Annual Open Exhibition entitled 'Draw 18' on this their centenary year. The Exhibition was held in the Menier Gallery, in Southwark Street in London. Croydon Art Society members Margaret Eggleton, Roger Lewis and Archie Niven were exhibiting.

CAS Website – General Invitation

Many members are submitting their works and details for inclusion on the CAS Website. Recently the site has been completely refurbished and now looks better than ever. Showcasing your work in a well frequented website is a fine opportunity to show off your talent. So why not join everyone in submitting your details. You'll find it's quite painless as Raymond Ore is ready to take care of all the technical bits that may put you off. All details posted will reach a worldwide audience; what could be better than that?

Simply e-mail photographs of your works and any written details about yourself to Raymond (ray@raymondore.co.uk) and these will be entered on to the website.

Denbies 2018 : 27th August – 9th September

It seems a while ago now since the heady days of summer 2018. But the warm summer weather was with us for our annual Denbies exhibition. The setting was glorious, nestled under the slopes of the North Downs in Dorking, amongst the vines of the Denbies Wine Estate. And, thanks to the hard work of all members exhibiting and organising, the exhibition matched the excellence of the setting.



Being so far outside of Croydon the Denbies exhibition always presents a challenge for everyone, involving as it does, so much travelling for transportation and stewarding. But a big thank you to everyone who helped in any way as, once the exhibition came together it was clearly a success artistically and, going by the many positive comments in the visitors book, was a pleasure for our visitors also.

At the final tally, we had sold 8 framed pictures and 5 browser items. Well done to everybody.



129th Annual Exhibition – Croydon Clocktower 2018 :

20th November – 8th December 2018

Following on very quickly from our Denbies Exhibition came our 129th Annual Exhibition. As the Society's principle exhibition of the year, it is always our biggest and most extensive. Thanks to the hard work of all our members we were able to exhibit a wide selection of pictures not only in the exhibition space within the library archive section but also on the many walls in the large foyer area as well.

We were honoured by the attendance of Mayor Bernadette Khan who also officially opened the exhibition together with Deputy Mayor Councillor Humayun Kabir. Following the official opening the Mayor also addressed the gathering and presented the prizes. After this the Mayoral party enjoyed a tour of the exhibition. The opening was well attended, and the wine and nibbles were very well received.

The high quality and wide range of the exhibits were reflected in the complimentary feedback received both during the exhibition, in the visitor's book, and also by word of mouth in comments to the stewards. It was clear that the exhibition sparked much appreciation from the public and hopefully raised the profile of the arts in Croydon. Congratulations and thanks to all exhibitors and to all who organised and worked so hard in arranging and putting up the exhibition.



Our President, Roger Lewis welcomes the Mayoral party.



President Roger Lewis and Chairman Anthony Waldbaum conduct the Mayoral party around the exhibition.



PP Archie Niven receives the Joan Kinder Salver



Evi Trickey receives the Constance Cooper Trophy



Philip Sadler receives the Joan Sewell Award

129th Annual Exhibition – Croydon Clocktower 2018



Sales this year were down on previous years maybe due to uncertainty in the current situation. However, congratulations to all who sold framed pictures or cards. The final total for sales stood at 9 framed pictures.



*Photography Archie Niven
and Anthony Waldbaum*



Phil Sadler

ART CLUB OF THE YEAR 2018

Winter/Spring Evening Activities

January 7th : Demonstration – Water Soluble Pencils

To commence this year's programme we are joined by Jonathan Newey who is to give a demonstration of rendering animals in water soluble pencils. If, like me, you have never used water soluble pencils then this demo could open some new possibilities to explore.



January 21st: Practical Evening – Portrait Model

Tonight, bring along your chosen ground and medium and join in a portraiture evening. The model has been arranged and the stage will be set for you to work to capture a lively rendering in a convivial setting.



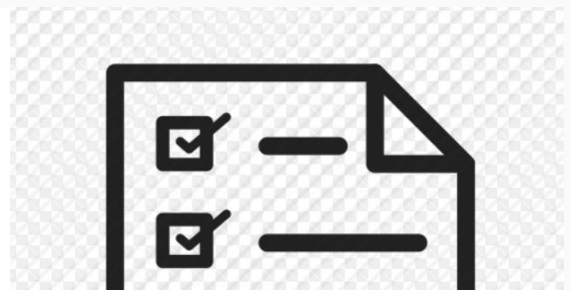
February 4th: Talk – “Out of Darkness”, Ronnie Ireland

Ronnie is a professional artist working in Surrey. Demonstrating widely. But he also gives a range of interesting talks. Tonight, Ronnie will be talking on the subject of Caravaggio and Rembrandt. It should be a lively and interesting evening.



February 18th : AGM.

There are many exciting developments taking place in our Society, Tonight's AGM is our chance to hear about new possibilities and to influence the direction we will take for the coming year. This is also a convenient opportunity to pay your annual subscription, so it might be a good idea to come armed with cash or cheque book, though you will also be able to pay by bank transfer.. Refreshments are free.



Winter/Spring Evening Activities

March 4th: Criticism Evening – Archie Niven

Bring along two pictures for tonight's criticism evening. It may sound harsh, but bear in mind that criticising a painting involves looking at what works well, as well as what could be improved, and it might help to turn that stubborn painting into a successful artwork. They don't have to be great pictures so don't be shy.



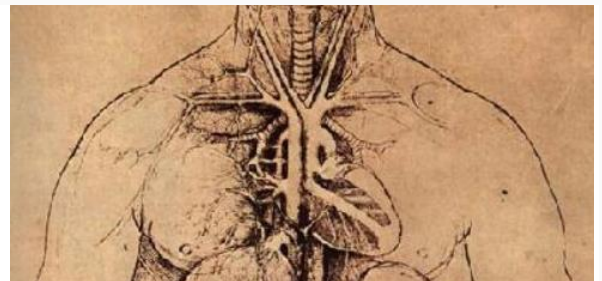
March 18th : Demonstration – Portraiture

Tonight's portraiture demonstration is to be given by Emil Nikolla. Emil works out of London and is now a general artist, But his first love was portraiture and tonight's demonstration is definitely one not to miss, so come along early, it's bound to be crowded.



April 1st : Practical Evening – Life Drawing/Painting

Another chance this evening to hone and consolidate your life drawing or painting skills. It's doubtless been said before but it's surely one of the best ways to improve these skills. So, do come along tonight and enter the fray.



April 15th : Talk – Gauguin – Elizabeth Strang

Paul Gauguin famously sought to escape European civilization to the Southern Seas. Tonight, Elizabeth Strang will present a talk on the life and works of this well-loved master French post-impressionist painter.



Evening Activities – How to Get There



HOW TO GET THERE

The venue for all the evening meetings is Christ Church Methodist, Minor Hall, Lower Addiscombe Road in Croydon, and the programme runs on alternate Monday evenings starting at 7.45pm. Although the venue is within the church premises, the access is from the rear car park off Canning Road. There is limited parking in the rear car park but we may also now park in the front car park off Lower Addiscombe Road. If both areas are full there is ample easy kerbside parking in Canning Road, although these are in marked bays there is no charge as the times are outside of the restricted hours. Please note that Canning Road can only be entered from Lower Addiscombe Road.

Refreshments are provided at mid-session (30p charge) and we look forward to seeing you. From experience it's best to arrive early.

Croydon Art Society – Art Club of the Year

As you are probably aware Croydon Art Society was recently awarded first prize in the Art Club of the Year 2018 competition organised annually by two art magazines, The Artist and Leisure Painter. Our prize was £500 worth of Jackson's art vouchers and £100 towards the cost of a demonstration Back in September



The five works chosen to represent the Society were:-

Panhead by Russell Elliot

Pale Rider, Still at Speed by Roger Lewis

Looking Out, Looking In, by Anthony Waldbaum

The Pig Farm by Julia Nolan

Green Mountain Chorus by Haruko Posford

The paintings were exhibited at an exhibition at Patchings Art Centre in Nottinghamshire from 13 October to 11 November alongside the other finalists.

The competition was judged by a panel led by well-known artist Hazel Soan. Here are her words as to why she chose our Society for the top prize.

"Croydon has included the broadest variety that also works together as a whole. They are strong individually, yet very different from each other, not only in style but in content and sentiment, and yet work as a set; in other words, offer a broad scope. This makes me think they must be an inclusive and interesting club to be a part of, with good conversation, concentration and application going on in their events. In my view the most thoughtful and thought-out selection and therefore my overall winner."

So there we have it - The Best Art Club/Society in the UK. Official. (Of course, we knew that all the time!)

Many congratulations and a huge thank you to the five talented artists who made this highly prestigious award possible.

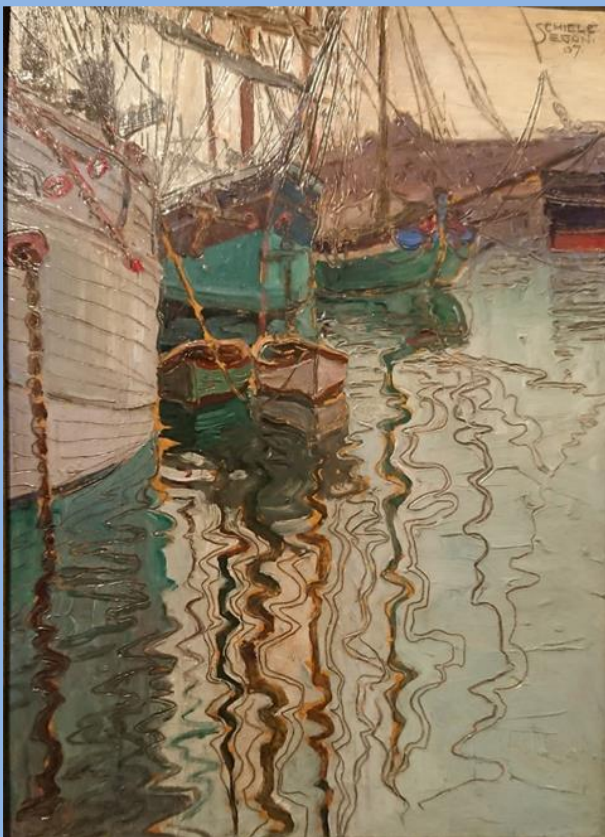
Dianne Gilmour

Egon Schiele in Vienna – October 2018

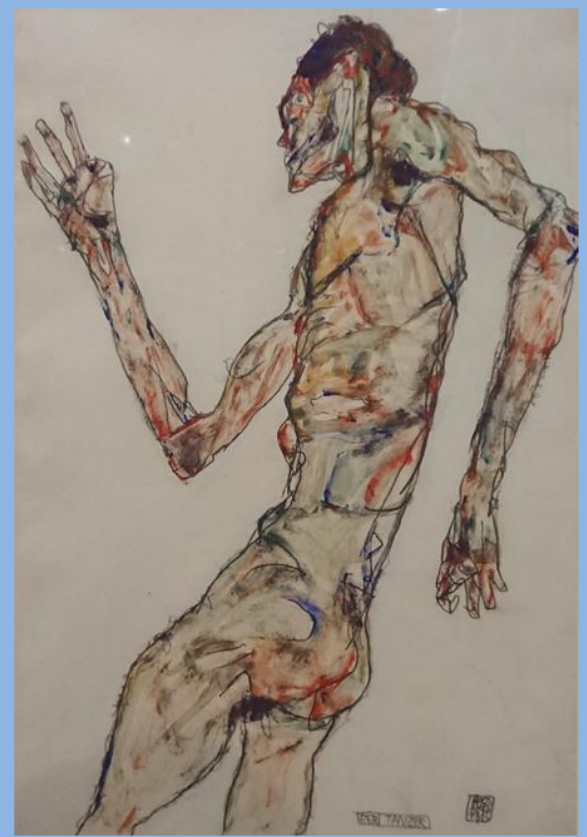
It's always a delight to visit the Belvedere galleries in Vienna if only to watch tourists taking selfies with Klimt's "The Kiss". There are some very serious academics who have built sophisticated kit to examine the X-ray, UV and IR images of works of art owned by the museum and they have produced a stunning exhibition about their collection of Schiele's work (https://www.belvedere.at/exhibition_Egon_Schiele). It was so good that I had to purchase their in-house catalogue (a heavy tome in English) and lug it across Europe. There is at the same time a good exhibition of his work and that of Klimt in the Leopold (<https://www.leopoldmuseum.org/en/leopoldcollection/focus/Schiele>). It astounds me that we have in London the Albertina's Klimt/Schiele drawings at the RA until 4th February 2019, to mark 100 years since Klimt and Schiele's deaths during 1918 (<https://www.royalacademy.org.uk/exhibition/klimt-schiele>).

During the Nazi rule in Austria much of their work was regarded as degenerate but somehow it survived and the Belvedere exhibition examines how Schiele's work was purchased, moved to the Albertina, sold on, stored, and was subject to restitution claims. Vienna in the first two decades of the twentieth century was an exciting place for artists and there are also associations with Glasgow's Charles Rennie Mackintosh whose work appeared in Vienna at the 8th Secession Exhibition in 1900 -(Billcliffe/Vergo Burlington Magazine 1977 https://www.jstor.org/stable/878930?seq=1#page_scan_tab_contents).

Schiele decided to escape from the claustrophobic atmosphere of Vienna and moved to Bohemian Krumau with his muse, 17 year old Wally Neuzil. He upset the locals and moved to Neulengbach (west of Vienna) where he again upset the locals and was arrested for seducing a girl under the age of consent. He then opted to marry a young lady from the establishment Edith Harms and, after First World War military service, made good contacts via his friend and patron Arthur Roessler.

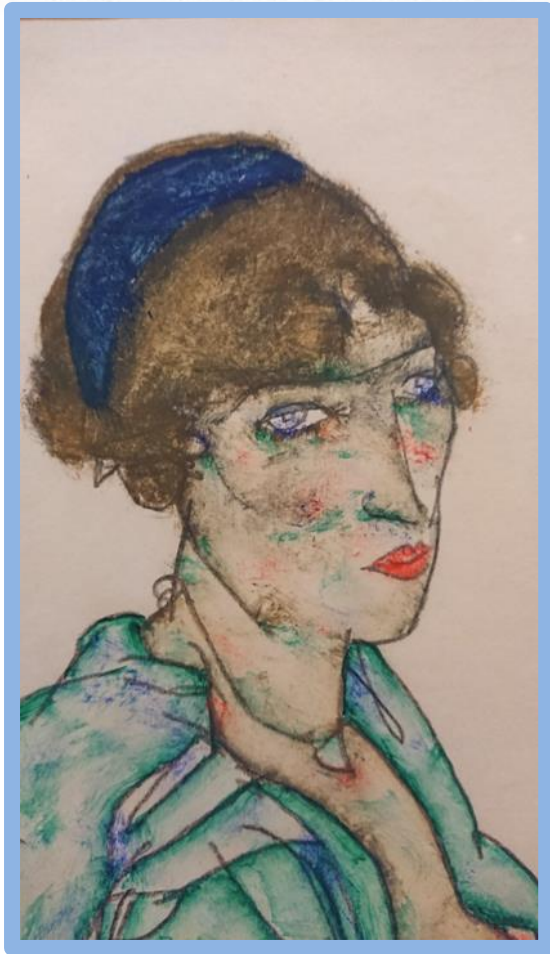


Leopold Exhibition - Harbour of Trieste - 1907



Leopold Exhibition - The Dancer - 1913

Egon Schiele in Vienna – October 2018 – (Cont.)



Leopold Exhibition - Sitting Semi-Nude with Blue Hairband - 1914

The Lower Belvedere exhibition provides deep insight into the context of Schiele's evolution from brilliant student at the Academy of Fine Arts in Vienna, mixing with the Vienna Secession group (Moser, Klimt, Hoffman, Olbrich, Wagner), guarding Russian PoWs and self-marketing to gallery directors. The book contains a fascinating level of detail in the form of letters, sketches, essays and photographs. The early works were an eye-opener so different from the arguably "degenerate" later work.



Apartment of Dr Morgenstern - 1924



Four Trees - 1917

Egon Schiele in Vienna – October 2018 – (Cont.)



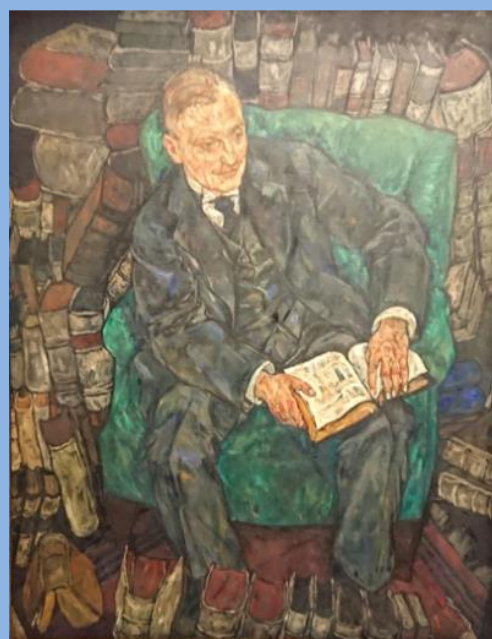
Eduard Kosmack - 1910



This painting of publisher Eduard Kosmack (1880–1947) numbers among the most stunning portraits in Schiele's oeuvre. The dramaturgy of the depiction—an intense gaze, not directly fixed on the beholder; the tense, erect posture with the hands pressed together between the knees—is also reflected in the unusually composed background. Positioned slightly off center, the subject is presented with a sunflower at his side, which enigmatically resists interpretation. Stylistically, the image's accented flatness and the relationship between figure and background indicate an affinity with Secessionist formalism. As in several other portraits painted around 1910, Schiele sharpens contours through the use of lightened colors.

The painting was purchased in September 1953 from art historian Ferdinand Eckhardt in the course of a trade.

Belvedere Research panels



Hugo Koller - 1918



Broncia Koller, herself a successful painter, commissioned Schiele to paint her husband in March 1918. Beginning in May, the two men met for several sittings, also at the Kollers' country estate in the Lower Austrian town of Oberwaltersdorf.

The electrochemist Hugo Koller (1867–1949) doctor of medicine and also a trained physicist, was aged fifty and at the height of his career. He was a passionate collector of prints and books, in which Schiele liked to browse. We immediately had the feeling that Schiele was someone who was very close to all of us," noted daughter Sylvia Koller in her diary. In Schiele's last completed portrait, Koller is aptly captured as an intellectual among his literary treasures. Eleven preliminary studies for the work are known at present.

The canvas was purchased by Welz Gallery at the end of 1948. Likely the sale was occasioned by the family's difficult financial situation; presumably it was made by Koller's children.



Belvedere reworked to show original colours.

The painting was first shown at the 1918 Secession exhibition in Vienna.

It was the first of his painting purchased by an Austrian Museum. The director requested that the dress be over-painted to remove the decorative arts component.

Bob Sleeman

On a Lighter (Darker?) Note

On The High Street

Of course, it's well known that the nations shopping habits are changing quite drastically with, at the last count, a total of 18% of all UK sales being carried out online. And this is a figure for the whole population. If you look only at the younger generation, the so called 'millennials' carry out 47% of their purchasing on-line. So it seems that the trend is more and more moving towards purchasing using eCommerce organisations as opposed to going round the good old shops.

But I have a suspicion that most people think that the existence of our shops is a given, and that there will always be the alternative of going to a nice bustling high street and looking round a range of well-presented goods in a pleasant environment. I'm guessing though that the reality will be that our local high streets just won't be viable. Retail organisations will be unable to support the cost of merchandising our 'stuff' just so that we can, if it suits us, occasionally visit their establishments to buy from them.

I suppose there will be some exceptions, Supermarkets surely will always be there, won't they? And of course, coffee shops and restaurants, and I guess charity shops will be with us for some time. But the biggest loss might be the large department store. I personally like the independent family run department stores, the Grace Brothers type establishments often seen in provincial towns, Alas I think these are struggling to survive, and It looks like their corporate cousins, the Debenhams and House of Fraser (other stores are available) will struggle unless they evolve into something quite different.

I try to imagine just what the high street of my grandchildren or great grandchildren will be like. I'd like to think that it will involve nice convivial pedestrianised boulevards with restaurants and coffee shops and the occasional bar. But then again, there could be a less sociable outcome, involving deserted windswept security guarded office frontages with an occasional, closed shop, elite venue for membership only activities. Time will tell.



WEBSITE AND BOOK OF ARTISTS

There are still a great many members, new and old, who do not have an entry on the Society's website or in the Book of Artists which is on display at every exhibition. We have now completed giving our website a brand new look and feel, so now is a great time to get your name and a few of your pictures added.

*For details refer to our webmaster Raymond Ore
ray@raymondore.co.uk*

Get in touch

**Contribute to future editions of the newsletter by
sending your News/Exhibitions reports and any items of
interest.**

Please let the Editor, Phil Sadler have your contributions

Deadline: 15th April 2019

email : p.sadler3@ntlworld.com

15, Albury Road, Merstham, Redhill Surrey RH1 3LP