



Welcome

Once again a very warm welcome to this our Spring 2016 edition of the Croydon Art Society's Newsletter. An especially warm welcome to those new members who have joined us since our last newsletter. I hope everyone finds this edition both informative and enjoyable. It certainly is an exciting time at present for the Society as it adapts to new challenges and opportunities and as always there are many new initiatives and plans under way, but more on that later. In the meantime, as we look forward to some more spring sunshine I hope you enjoy reading this latest edition of the newsletter.

Editorial

It seems today that almost everybody participates wholeheartedly in some or all of the social media networks available, or maybe has a blog or website. As a result, we have become ever more used to the photographic image in a role of mediating our lives one to another. The images we publicise are all in full pristine colour and in very high definition. In contrast I recently took a trip to Tate Britain and I found it very refreshing to view some of the great works of art at first hand, through my own two eyes not through the cold lens of the camera, and visually experiencing firsthand the actual pigment and brushstrokes applied by the artist sometimes hundreds of years ago. It is certainly a different experience to that of viewing a photograph, however well produced that photograph may be. You may have entered works into exhibitions where, for the initial assessment of entries, photographs are required of your submitted works, which are then viewed to form a shorter list of entries. Whatever the merits of this system it could be argued that photographs might not represent the subtleties of your work. Surprisingly for those exhibitions that I have entered using this system you must pay just to submit the photograph, whether or not your artwork is subsequently accepted into the exhibition. It obviously must save time, and as that particular commodity is in such short supply these days I guess the practice will continue; but I for one don't think that is a very good thing especially in light of my rich experience at Tate Britain.

Phil Sadler

Officers and Committee - 2015

President Archie Niven

Chairman: Anthony Waldbaum

Vice Chairman: Jessica Saraga

Hon. Secretary Jeanette Niven
6 Bennetts Way, Shirley, Croydon. CRO 8AA
Tel: (020)8777 9206

Hon. Treasurer Bob Sleeman
Hilmarton, 50 Northampton Road, Croydon.
CRO 7HT
Tel: (020) 8654 5814

Hon. Auditor Dick Allen

Committee Members:
Dianne Gilmour
Heather Miller
Claire Murthy (Co-opted)
Raymond Ore
Jessica Saraga
Evi Trickey
John White

Also

Website entries Raymond Ore
Hire of Hooks Bob Sleeman
Videos, DVDs and Refreshments Ken & Sylvia Head
Website:
<http://www.croydonartsociety.org.uk>

NEWS OF MEMBERS

New Members

As you may recall at this year's AGM we changed the rules to enable applications for membership to be considered as and when necessary instead of only twice a year. We therefore have recently been pleased to welcome two new members - Nic Vine and Zoe Parker. We hope they will enjoy their membership of the Society.

Summer Lunch

Mary and Dick Allen have once again kindly offered to host the Summer Lunch at their lovely home in Warlingham. The date will be **Sunday 24 July 2016** so please put a note of this date in your diary. Details to follow nearer the time.



Warlingham Art Group

If you or anybody you know enjoys painting in the company of other like-minded people then you would be very welcome to come along to Warlingham Village Hall any Tuesday morning about 11.00am to meet us for a cup of coffee and to see if you would like to join us.

Further information from
Joan Aeschlimann tel.01883 624 330

EXHIBITIONS

Society of of Graphic Fine Art Exhibition

Margaret Eggleton, Ken Head, Roger Lewis and Archie Niven all had work in a Society of Graphic Fine Art Exhibition in RK Burt Gallery in Union Street, London SE1 from 5 to 15 April.

John Stillman

Our member, John Stillman, had four works in the recent exhibition in the Mall Galleries of the Wapping Group. One of his paintings was sold. Well done John! John is a keen 'Wapper' and also an Associate of the Royal Society of Marine Artists.

Chelsea Art Society

A number of CAS members usually show in the Chelsea Art Society Annual exhibition. Although only a five-day event, this year being on Thursday June 16th until Monday June 20th, it has a high profile in the Chelsea area. It is an open but juried exhibition and the handing in date is on Monday 13th June from 8.30am to 3pm. Further details from: chelseaartsociety@gmail.com

New Website

Raymond Ore is continuing in his work on re-modelling and bringing up to date the society's web site. It's well worth a visit if you haven't been there already, just to see what has been achieved and to get a taste of the future on-line face of the CAS. Even more good news for members is that it is just waiting for us to post individual details of ourselves and our works which will then reach a worldwide audience.

Simply e-mail photographs of your works and any written details about yourself to Raymond (ray@raymondore.co.uk) and these will be put on to the website.

Spring/Summer Evening Activities

April 25th : Talk - Two Rivers Paper Company

Tonight we have a rare opportunity to glimpse into the world of paper making, through a fascinating presentation coming to us all the way from Somerset, where at the 400-year-old Pitt Mill the ancient craft of producing traditional handmade artists papers is carried on using traditional equipment and natural fibres.



May 9th: Practical : Life Class

Arm yourself with the medium of your choice and prepare to hone your life drawing skills as this evening we have a life model coming to sit for us. A great opportunity to revisit your techniques of observation and draftsmanship. It's simple – Isn't it??



May 23rd : Watercolour Demonstration – Flowers

Tonight we are to be treated to a wonderful watercolour demonstration by one of our members, Sandi Jane Gray. Sandi's watercolours are inspired by her love of colour, which she uses it to great effect in her floral art. Sandi is also an experienced and well-travelled tutor so we should be in for an informative and inspiring evening.



June 6th : Talk - Claud Lorrain

This evening, another of our members, Jessica Saraga is going to present a talk on Claud Lorrain, one of the great painters of the French Baroque. It will be fascinating to gain an insight into the life and works of a painter whom Constable acclaimed as "the most perfect landscape painter the world ever saw".



Spring/Summer Evening Activities

June 20th - Practical Evening - Portrait Model

Tonight we have a practical evening. You will be faced with the simple task of producing a likeness, in the medium of your choice, with suitable style and panache, or, just as it comes. It's always a challenge but very satisfying when it goes well. Come early as these evenings are invariably well attended.



July 4th : Demonstration - Landscapes

William Newton – will be visiting us tonight to demonstrate in water mixable oils. William is an experienced artist and tutor working in most mediums and on almost any subject-matter, but notably marine painting and landscapes. Come early to enjoy an inspiring evening and perhaps a way of escaping the smell of old turpentine.

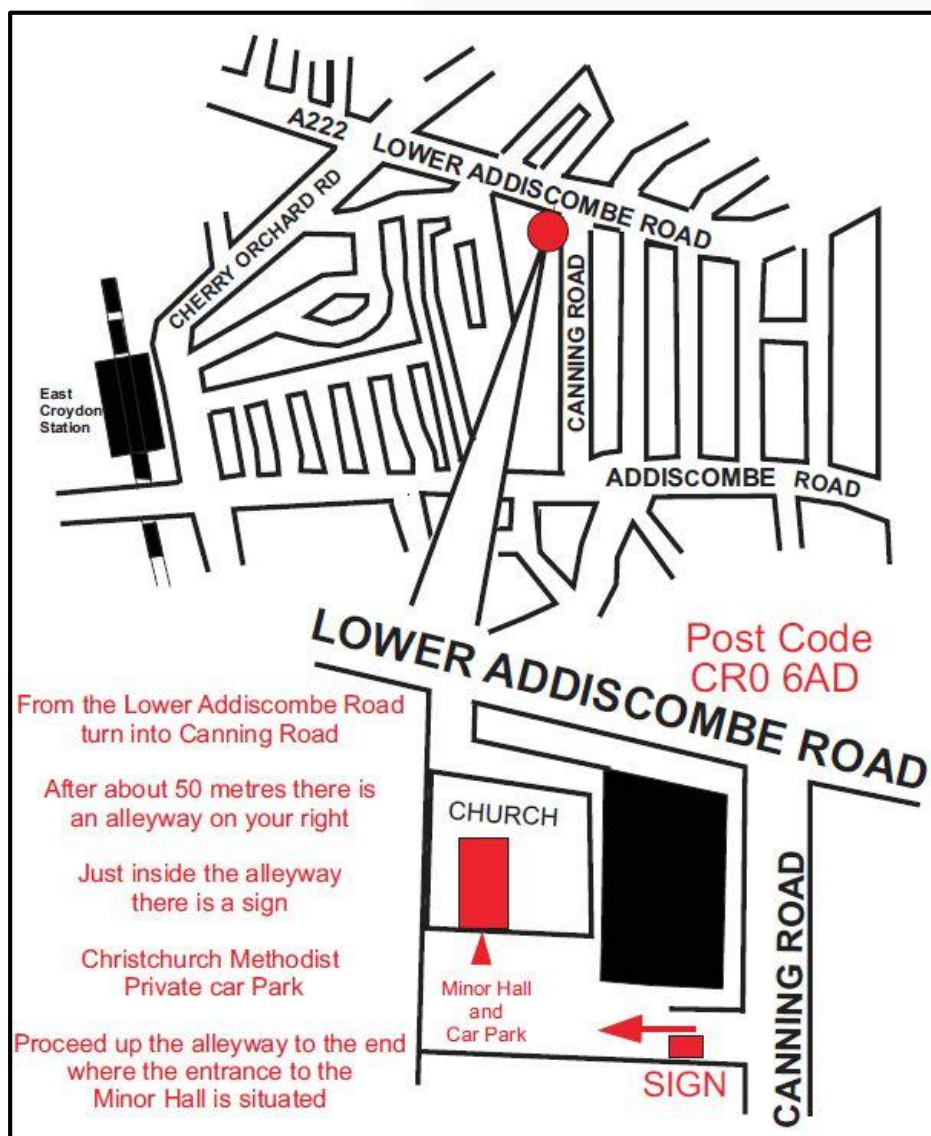


Summer Vacation mid July till 5th Sept 2016

There will be no further evening activities until we resume on 5th September 2016. So best wishes to everyone and I hope that whatever you are doing you will have an enjoyable and relaxing summer break.



Evening Activities – How to Get There



HOW TO GET THERE

The venue for all the evening meetings is Christ Church Methodist, Minor Hall, Lower Addiscombe Road in Croydon, and the programme runs on alternate Monday evenings starting at 7.45pm. Although the venue is within the church premises, the access is from the rear car park off of Canning Road. There is limited parking in the rear car park but we may also now park in the front car park off of Lower Addiscombe Road. If both areas are full there is ample easy kerbside parking in Canning Road. Although these are in marked bays there is no charge as the times are outside of the restricted hours.

Refreshments are provided at mid-session (30p charge) and we look forward to seeing you. From experience it's best to arrive early.

OBITUARY

IN MEMORIUM

Freda Potts

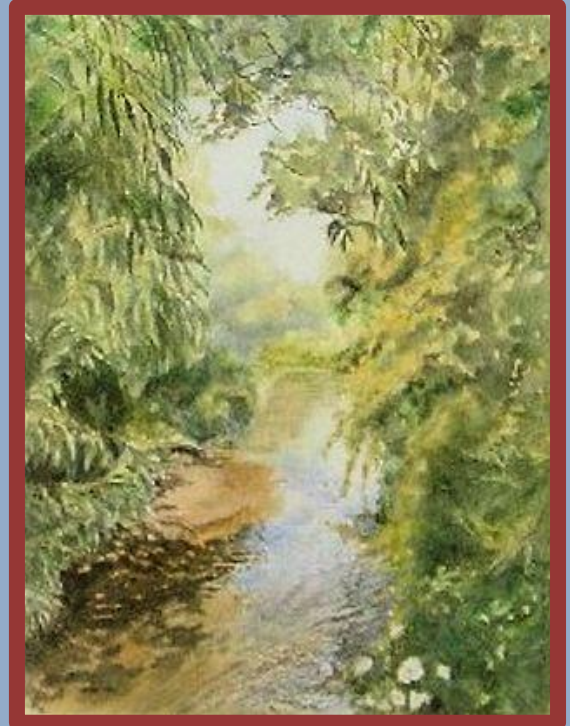
Many of our older members will remember with affection Freda Potts who passed away just before Christmas last year. Freda was one of those members who we were pleased to put on our 'retired members' list, keeping in touch with her through our newsletter and she in turn with Christmas cards as always 'from Freda and Miss Kitty', her beloved cat. The photograph shows her in happy days in 2002 at our Summer Lunch. A few years later in 2008 her health deteriorated to the point where she was no longer able to look after herself in her house in Waddon and so went to live with her daughter in Woodthorpe, Nottingham. Typical of Freda and despite her dementia getting worse she apparently took charge of the art group in the local old peoples' care home.



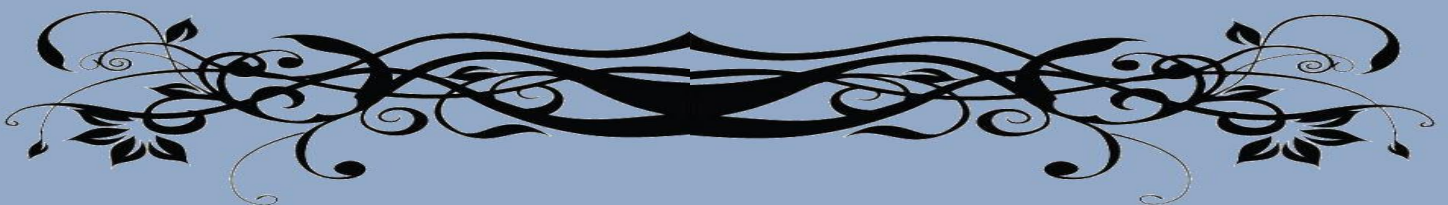
Members will remember she once gave us an illustrated talk at the Society about her life and particularly her experiences in occupied France during the war. Totally ignoring pleas from her parents she set out to study art in Paris in 1939, yes 1939. Needless to say shortly afterwards she was interned. Undeterred she forged her own travel documents, worked all over France and eventually returned unscathed to UK.

Freda joined our ranks in November 1989 but not before being rejected for membership two years before. Times were tough even in those days when we had Associate members.

It was a pleasure to know Freda who painted in all media, did pottery and for many years staged solo exhibitions in the Sun Lounge, Fairfield. She was in her nineties when she died and no doubt her travel documents were in good order..



Archie Niven



FAREWELL FAIRFIELD



It does seem surprising to me that the Fairfield Halls, a complex which I am of an age to remember in it's early years (being built in 1962), and which over the years has become so well known in both Croydon and the South East as a prominent venue for the arts, is now scheduled for demolition and refurbishment. It seemed to me, when it was first built, that it looked so modern, huge and exciting that it would surely go on for many, many decades in that form; certainly more than the five or so that it will have lasted if the plans go through. Well that must be progress. I am also very surprised that when it was new it's architecture looked so fitting for such venues, somewhat in the style of the Festival Hall complex in London, a bit stark perhaps but for cutting edge art performances quite dramatic. But now when I glimpse the façade of the halls through the dust of all the demolition going on in Croydon, I'm surprised to find that it's 1960s facade does perhaps appear strangely outmoded. (with apologies to those who quite like the Fairfield Halls, including myself),

So we will look forward to the refurbished Fairfield Halls and with any luck will find them to be an even better space for our activities than before. As far as I am aware the refurbishment is scheduled to be performed over a two-year period.

For the Croydon Art Society over the years the Halls have understandably played quite a significant role in our yearly schedules, hosting a multitude of Annual Exhibitions, Members Exhibitions, Christmas Lunches and many other events. I'm sure that the temporary loss of such an important and appropriate venue will be difficult to manage. However, I'm also sure that exhibition spaces and facilities will be found within the Arts provision for Croydon, that will be able to take Fairfield's place in the interim. Needless to say such venues do not seem to be abundant, and for this year the Clocktower Gallery has become the main space having a distinctive civic Croydon pedigree for our major activities. Even so this venue has drawbacks in it's current form; the space is quite limited at present, and it is perhaps not in the most prominent of positions within it's site. I understand there may be plans to return the space to it's original size and purpose as an extensive Art Gallery. But for this, we will have to wait and see.

FAREWELL FAIRFIELD (Cont.)

On Wednesday 6th April your President attended a public meeting at Fairfield the agenda being to keep the Halls open while phased redevelopment takes place. This, of course, is contrary to the plans of the current Labour administration who want to save 4.5 million pounds by closing the building completely for two years.

Many points came out of the meeting including:

- Two years could finish up nearer eight to ten if performance in similar developments in other towns and cities is considered.
- From a technical point of view many errors were pointed out in the proposed plans and it will mean back to the drawing board.
- Many of you will have read in the press plans for a new 2000 square metre art gallery in Croydon. The developer for this gave a good account but what is obvious is it will be totally commercial, probably not for us and if one believes the likely rents - way out of our finances.

If the Council's proposed plans go ahead there is a distinct possibility the Halls will never re-open or if so, way in the future. At the meeting, attended by 200+ members of the public, it was noticeable that the two leading Councillors involved, namely Newman and Godfrey, who could have answered many questions, though invited did not turn up. Ah well! - watch this space.

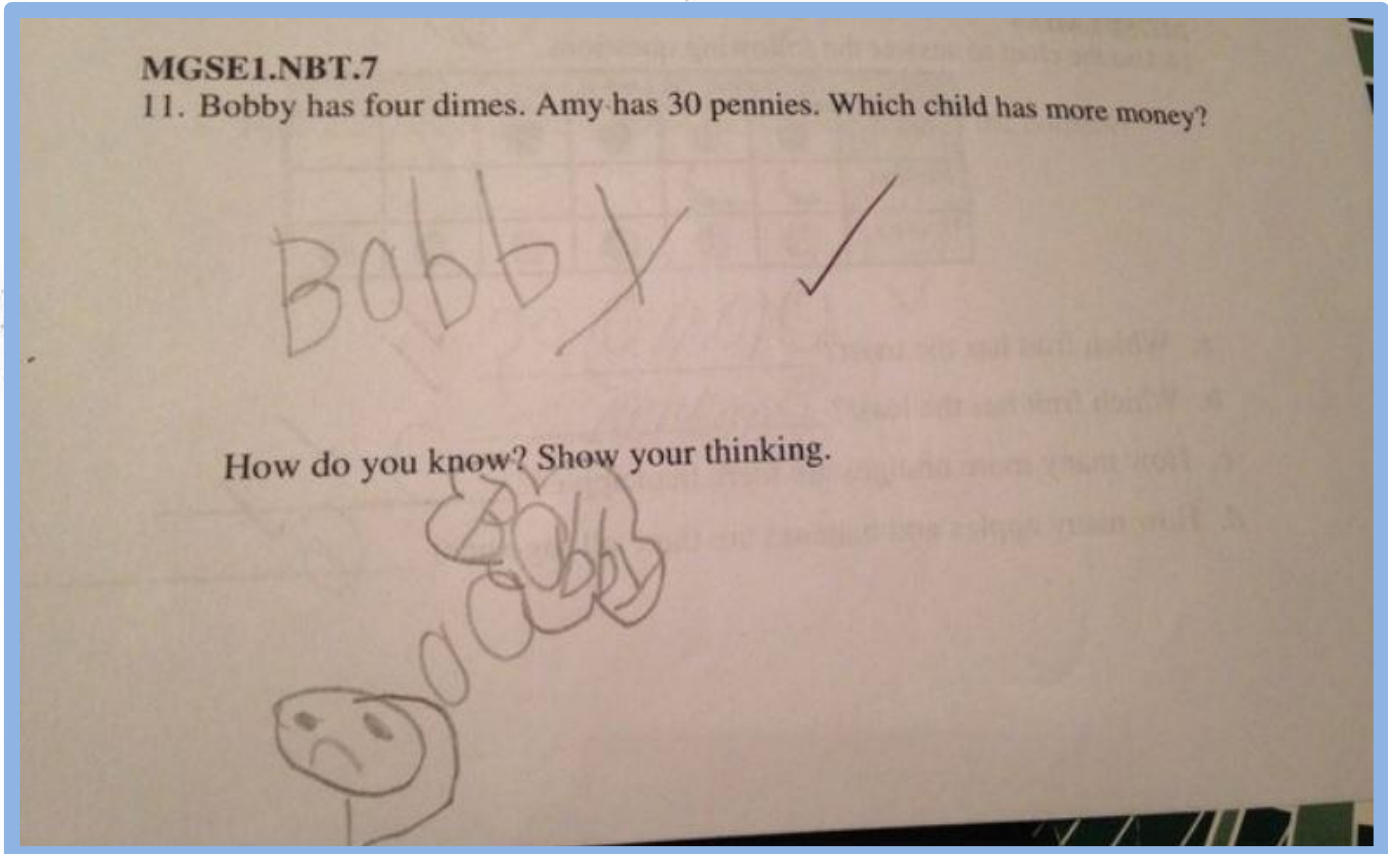
In the meantime if anyone has made any discoveries of any suitable Gallery/Exhibition spaces in or around Croydon that may be able to stand in Fairfield's place for a couple of years, then please speak up. All suggestions will be gratefully received.

Phil Sadler



Standard Assessment Tests

Children are tested so much in their time at school, and that testing is starting earlier and earlier in their young lives; It appears that this test question was meant for one much older in years, resulting in this innocent but priceless response



WEBSITE AND BOOK OF ARTISTS

There are still a great many members, new and old, who do not have an entry on the Society's website or in the Book of Artists which is on display at every exhibition. We have now completed giving our website a brand new look and feel, so now is a great time to get your name and a few of your pictures added.

At present this is FREE to all members so why not take advantage while it still is.

For details refer to our webmaster Raymond Ore
ray@raymondore.co.uk

Get in touch

Contribute to future editions of the newsletter by sending your News/Exhibitions reports and any items of interest.

Please let the Editor, Phil Sadler have your contributions

Deadline: 15th August 2016

email : p.sadler3@ntlworld.com

15, Albury Road, Merstham, Redhill Surrey RH1 3LP