



Officers and Committee - 2016

President Archie Niven

Chairman: Anthony Waldbaum

Vice Chairman: Jessica Saraga

Hon. Secretary Jeanette Niven
6 Bennetts Way, Shirley, Croydon. CRO 8AA
Tel: (020)8777 9206

Hon. Treasurer Bob Sleeman
Hilmarton, 50 Northampton Road, Croydon.
CRO 7HT
Tel: (020) 8654 5814

Hon. Auditor Dick Allen

Committee Members:
Dianne Gilmour
Heather Miller
Claire Murthy (Co-opted)
Raymond Ore
Philip Sadler
Evi Trickey
John White

Also

Website entries Raymond Ore
Hire of Hooks Bob Sleeman
DVDs and Refreshments Ken & Sylvia Head
Website:
<http://www.croydonartsociety.org.uk>

Welcome

It is with great pleasure that I welcome you to the Winter 2016 edition of the Croydon Art Society's Newsletter. As we move into the festive season there is always plenty to do, but when you do get a few spare moments, take the time to sit back and read here about the latest and upcoming events in our Society, what's to look forward to and to catch up with all the latest news. May I also take this opportunity to wish everyone a very happy Christmas and a peaceful and productive 2017

Editorial

The business of choosing, searching out and purchasing art materials and equipment has always held some compelling fascination for me. The alluring promise of discovering some hitherto unknown new vibrant pigment or undiscovered technique or just to purchase some shiny new brushes or untried medium, all seems a very enticing, albeit expensive prospect. When I find myself in a well-stocked art supplies shop I think I become like the proverbial child in a sweetshop, gazing wide eyed at all those delightful fat tubes of exotic paint and yet undiscovered gadgets and equipment, all holding so much promise. But, paradoxically, back in real life It does appear that I all too readily settle for using the particular narrow selection of paints, grounds, implements and methods that I have become familiar with over the years. I'm seemingly resistant to breaking new ground and experimenting perhaps by moving out of my well-established comfort zone, after all as they say, if you feel it works why fix it? Nevertheless, I'm sure It could be quite liberating to branch out and try some new techniques or processes and perhaps kick start some new creative avenues. But alas predictably, when I get inspired to start a new painting, out come my old friends, the battered tubes of colour and beaten up old brushes. It's for just this reason that our Society runs an excellent and diverse programme of evening activities, to inspire and broaden our artistic experience. The first part of the programme is highlighted in this issue. Maybe I'll make a new years resolution perhaps to pick up on some of the techniques to be showcased.

Phil Sadler

NEWS OF MEMBERS

New Members

Six applicants submitted their work for selection on Saturday 8 October and membership was offered to four of them.

We are pleased to welcome Jenny Madalura, Mahrukh Bashir, Deborah Holman and Henry Jones and hope they will enjoy the many activities of the Society.

Three of the new members submitted one painting each for the Clocktower Exhibition, all of which were accepted.

Icon Painting Workshop, London

An Icon Painting Workshop is to take place in London from 27 March - 1 April 2017, details as follows.

Icon Painting Workshop
London, UK.

Experience the unique spiritual world of the Byzantine Era through icon painting



Icon Painting Workshop
March 27-April 1, 2017, London, UK
St. Nektarios Greek Orthodox Church.

Join us on this six day intensive course under the direction of visiting master iconographer and expert instructor Theodoros Papadopoulos from Greece. This Archangel Gabriel icon will "come alive" as he will guide you step by step, through the ancient techniques of Byzantine Iconography. Let us journey together, discovering anew, this traditional artistic expression of theology and spirituality often called the "meeting place of the Divine". Whether you are beginner or a professional, this workshop offers the opportunity to learn or refine your techniques.

Tuition fee £400. The price includes most supplies including boards, pigments and brushes.
Space is limited and early registration is suggested.
For enrollment or information please contact Theodoros Papadopoulos at theodoreicons@gmail.com
You can register online through the website www.theodoreicons.com

For more information contact Rosie Gwilliam

Warlingham Art Group

If you or anybody you know enjoys painting in the company of other like-minded people then you would be very welcome to come along to Warlingham Village Hall any Tuesday morning about 11.00am to meet us for a cup of coffee and to see if you would like to join us.

Further information from

Joan Aeschlimann tel.01883 624 330

EXHIBITIONS

Draw 16 - The 95th Annual Open Exhibition of the Society of Graphic Fine Art.

We were well represented in this excellent exhibition which ran from the 3rd to the 15th October 2016. Margaret Eggleton, Michael Gage, Ken Head, Roger Lewis, Archie Niven and Angela Williams all had work on display.

Royal Society of Marine Artists Open Exhibition 2016

This prestigious show in the Mall Galleries (27th September to 8th October) saw two of our members showing their work. John Stillman who is an Associate of the RSMA and Archie Niven.

Lingfield Art Exhibition.

Among nearly 300 works on display Archie Niven and Pat Topp had paintings in this exhibition which was in the Lingfield and Dormansland Community Centre – 24th to 30th October.

New Website

Many members have yet to post their individual details on to the new website which Raymond Ore has worked so diligently upon. All details posted will reach a worldwide audience, What could be better than that?

Simply e-mail photographs of your works and any written details about yourself to Raymond (ray@raymondore.co.uk) and these will be put on to the website.

The Croydon Art Society Sketching Event

Do you enjoy sketching?

For many artists, sketching is an enjoyable, rewarding activity in their daily 'art' lives. For some, it leaves little more than a token smudge of graphite, a few scratchy lines and a lukewarm enthusiasm towards what can seem like a purposeless waste of time!

Well, at The Croydon Art Society, there are *no holds barred* where sketching is concerned! It is known that it is not the final sketch that leads to sketching enjoyment and success – but the journey itself!

Claire Murthy and Jessica Saraga have offered to hold a sketching event next year, for members, when the weather warms up over the brighter Spring and Summer month. Information about where and when will be released nearer the time, and they also hope to include an article in an art magazine about the event.

Would you like to join in?

If you are interested in finding out more about the sketching event, please speak with either Claire or Jessica at one of the meetings or email Claire at thecroydonartsociety@gmail.com with queries and suggestions you may have, even if it's simply your own view on sketching or good locations. Ideas and suggestions would be most welcome!

More information will be available at the next meeting, plus you will have the opportunity to add your name to the list of members interested in sketching together next year!

Meanwhile, happy sketching!



EXHIBITIONS

Denbies Exhibition 29th August to 11th September 2016



After a very disappointing exhibition at this venue last year where we made a financial loss for the first time ever at any of our shows your Committee naturally approached this venture with some fear and trepidation. Not to worry, our concerns were unfounded and in the end all went very well with good sales and attendances.



We sold 14 framed and 7 unframed works as well as £158 worth of cards. Of the 16 purchasers who bought 3 were past buyers. Well done to all of you who helped make it a success and many thanks to all who stewarded the exhibition helping to sell 33 of our 2017 calendars. Visitor numbers to the gallery were much the same as in the past with 1459 being recorded.

Worked out on the more you sell the less you pay basis our new system of costing seemed to work very well. We had indicated a possible cost per picture hung of £7.00. This did not put any of you off submitting and no doubt all who took part were happy when the final cost per picture worked out at the bargain price of £2.50.

On a critical note. Once again, we had some cases where members just do not read their exhibition rules. Oversize works, no proper backing, dirty glass, etc. Remember, rules have been devised for a reason and by not following them you only create extra work for someone else.

All that said – a good exhibition and well done!

Archie Niven



EXHIBITIONS Cont.

127th Annual Exhibition 11th October to 29th October 2016

All of you will be aware that Fairfield Halls have now closed and as a consequence our 127th Annual Exhibition was held this year after over 50 years at Fairfield in the much reduced space of the Clocktower Gallery. Some of you, like me, have been in the Society long enough to remember our exhibitions in the Arnhem Gallery with over 200 works on display, then when we had to leave there, 150 or so paintings in the Sun Lounge reduced to 120 when a café took over and now 70+ works in the Clocktower. I hope this trend will go no further.



But back to the present. Our exhibition this year was one of our best with 77 pictures on display. In keeping with our time honoured traditions there was a selection of what to hang on the walls and sadly 6 works did not make the final cut. The exhibition as expected was well supported with 47 members taking part including 3 new members whose work was well up to the standard we have come to expect..



Philip Sadler was awarded the Constance Cooper Trophy for the best 'non oil' work in the exhibition and Endre Hevezi the Joan Kinder Silver Salver for the most innovative work. The judges felt that out of the few oil works submitted none reached the required standard and consequently the Joan Sewell Award was not given on this occasion.

Sadly sales were not what we would have hoped for and in the end only 5 pictures went to new homes. Card sales did well with 150, a third of those on show, selling. Though the number of visitors to the exhibition was up by 100 on the previous time at Clocktower it was nevertheless a disappointing turnout of the art loving public.

I have written to the museum staff asking if there is any way we can help them to improve the attendance. Better signing, directions, etc. I will be meeting with them in the New Year.

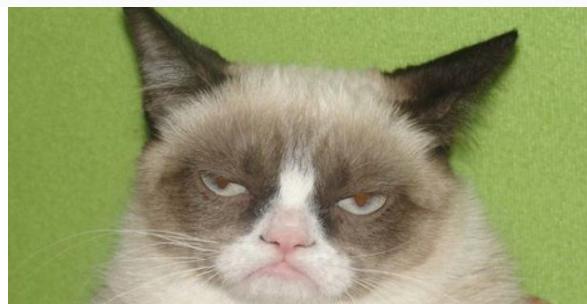
Like it or not, unless you can suggest otherwise, we are stuck for the moment at the Clocktower. Hopefully Fairfield will reopen in the two years they claim. Again hopefully better facilities may be available there in the future.

Archie Niven

Winter/Spring Evening Activities

January 9th : Criticism Evening –Members

We're a friendly bunch, always ready to offer useful advice and constructive criticism, and tonight we have the perfect forum for the exchange of artistic wisdom and insight when we get together for a Members Criticism Evening. So bring along two pictures for consideration. Proceedings will be helped along by an M.C. and mid-session refreshments.



January 23rd: Practical Evening - Portrait Model.

It may be early in the year but what more opportune moment could there be to bring out your favourite materials and equipment and join battle in a portraiture practical evening. Our model is ready, the stage is set and it only requires your creative inspiration for the magic to happen.



February 6th : Demonstration - Pastel - Roger Dellar

I, for one, am going to set out very early to ensure a seat for tonight's pastel demonstration by Roger Dellar. Roger' is a professional figurative artist who keenly observes people in their environments recording and interpreting them within captivating lighting effects. You can be sure you'll be inspired by this evening's activity.



20th February : Annual General Meeting

We break the activity programme tonight for the proceedings of the AGM. Nothing stands still, as they say, and it's also very true in our Society. With important matters on the agenda come along to help shape the future of the Society.



Winter/Spring Evening Activities

March 6th - Looking at Suburbia - Gail Cunningham

Tonight, we're delighted to welcome Professor Gail Cunningham, Director of Cultural Liaison & Operation at Kingston University, to present a fascinating talk exploring suburbia. We all may at some time depict the built environment in our paintings, so come along to gain a clearer vision of what's behind those busy facades.



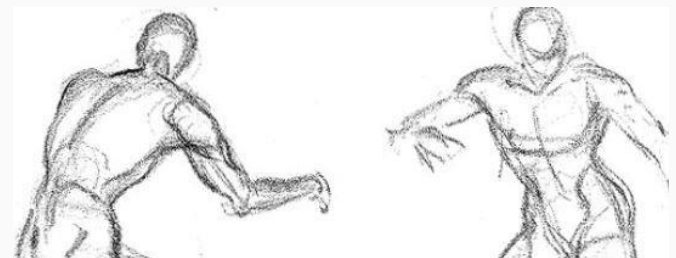
March 20th : Criticism Evening - Mania Row

Tonight we are very pleased to welcome artist and art educator Mania Row, who is to critically review our work. Bring along two painting this evening for an opportunity to gain the insights of a well-established and prolific artist about your own artistic creations. Don't be shy now.



April 3rd : Practical Evening – Life Model

Another opportunity tonight to tame those unruly drafting skills. Will those proportions be accurate, or those lines be wobbly? Tonight's Life class is in an informal and friendly setting so it really doesn't matter – just for the sheer enjoyment, break out your favourite materials and come along.



April 10th : Demonstration - Mixed Media

It's a pleasure to welcome CAS member Margaret Eggleton tonight for a mixed media demonstration. Margaret is an artist, illustrator, author and teacher. Widely exhibited, her versatility allows her to encompass a broad range of subjects and techniques. We can be sure of an interesting and inspiring evening ahead.



Evening Activities – How to Get There



HOW TO GET THERE

The venue for all the evening meetings is Christ Church Methodist, Minor Hall, Lower Addiscombe Road in Croydon, and the programme runs on alternate Monday evenings starting at 7.45pm. Although the venue is within the church premises, the access is from the rear car park off of Canning Road. There is limited parking in the rear car park but we may also now park in the front car park off of Lower Addiscombe Road. If both areas are full there is ample easy kerbside parking in Canning Road. Although these are in marked bays there is no charge as the times are outside of the restricted hours.

Refreshments are provided at mid-session (30p charge) and we look forward to seeing you. From experience it's best to arrive early.

OBITUARY

IN MEMORIUM

Duncan Russell

17th March 1927 to 23rd August 2016

Life member of The Croydon Art Society



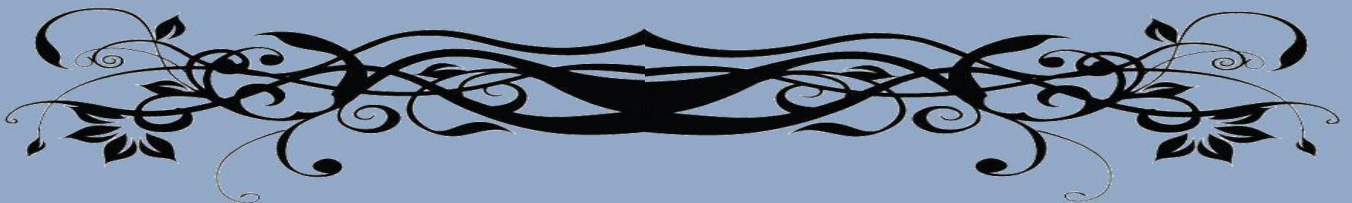
It is with great regret we record the passing of Duncan Russell who died unexpectedly on Tuesday 23rd August at 2.00pm in hospital. Duncan had moved with his partner Sally to a care home in Rochester and it was only a matter of some ten days before when the President and the Secretary had visited him, and found him in good spirits and well settled in to his new surroundings. A lovely man, he will be missed by all those who knew him.

Duncan first joined our ranks in March 1973 playing a very active part in our exhibitions and meetings right from the outset. With his colleague, Keith Burtonshaw, also a past member, he staged very many exhibitions of his work in Croydon, West Wickham and elsewhere. A keen watercolourist he travelled far and wide painting on the spot and the results of his labours are to be found in very many households.

Also a member of the West Wickham Art Association he was their President for a number of years and very active in that group.

Ill health prevented him from attending our meetings and because of this he made the decision to go to Rochester to be near his relatives. Not given to many, this Society was most pleased to make him a Life Member in February 2016 in recognition of his many years of service. A lovely man, good artist and good friend, he will be missed.

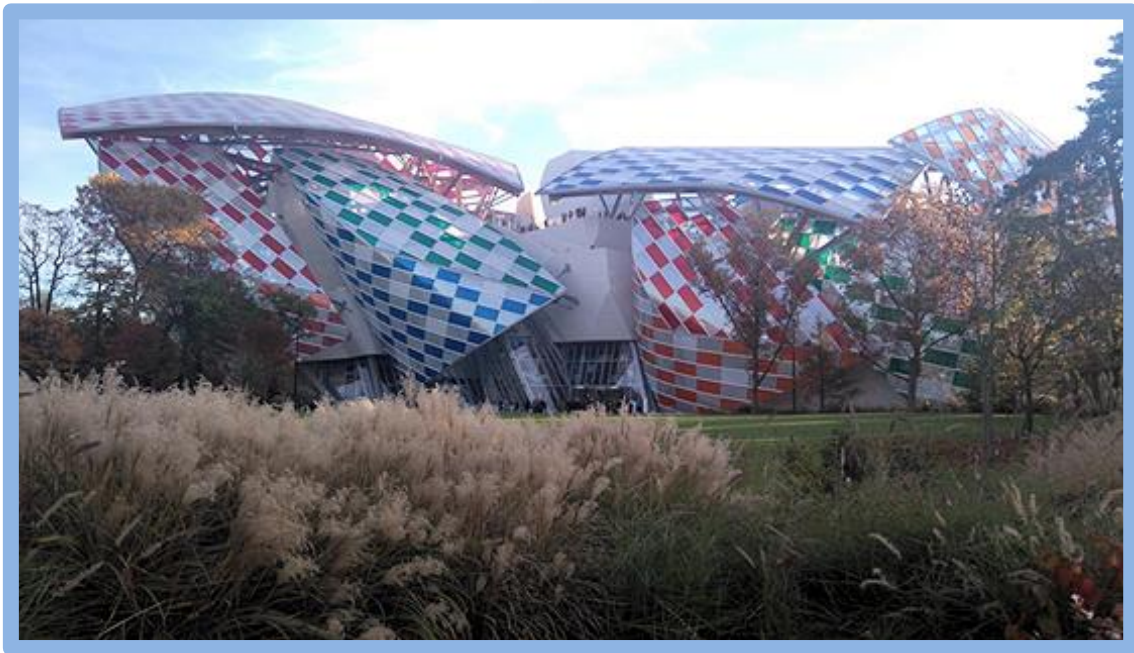
Archie Niven



Back to Paris –

by Bob Sleeman

“This feels more safe” commented our receptionist at L’Hotel Pergolese as we thanked her for another excellent experience on the western edge of Paris. Central areas and Metro stations remain under the conspicuous protection of armed forces, while life goes on in the cultural capital of Europe. This relaxed location between the Arc de Triomphe and the Peripherique hosts outlets for powerful motorbikes and Peugeot HQ as well as the normal selection of restaurants and a superb delicatessen. From Avenue de la Grand Armée there is easy access to La Défense, the Louvre, Hotel de Ville (Pompidou Centre), Bastille and Nation on Metro Line 1. From Port Maillot take the RER to Musée Marmottan Monet, Eiffel Tower, Musée d’Orsay and Notre Dame. There is even an easy link from the Eurostar Terminal on Metro Line 2 using the pedestrian sub way via La Chapelle. Another bonus is proximity to the Bois de Boulogne for fresh air, exercise and the Foundation Louis Vuitton.



Foundation Louis Vuitton from the Jardin d'Acclimatation (<http://jardindacclimatation.fr/>)

Icons of Modern Art is running here until 20 February 2017 (www.fondationlouisvuitton.fr/en.html) an opportunity to see the Chitouchine collection from Moscow and St Petersburg. A successful Russian businessman supported the up and coming artists in Paris from 1898 to 1918 including Monet, Degas, Cezanne, Gauguin, Picasso and Matisse as well as Brangwyn and Burne-Jones.

There is a definitive catalogue at about £50. The building (by Frank Gehry) is an exciting structure.



Monet: Le déjeuner sur l'herbe)



*Cézanne:
La Dame en blue*

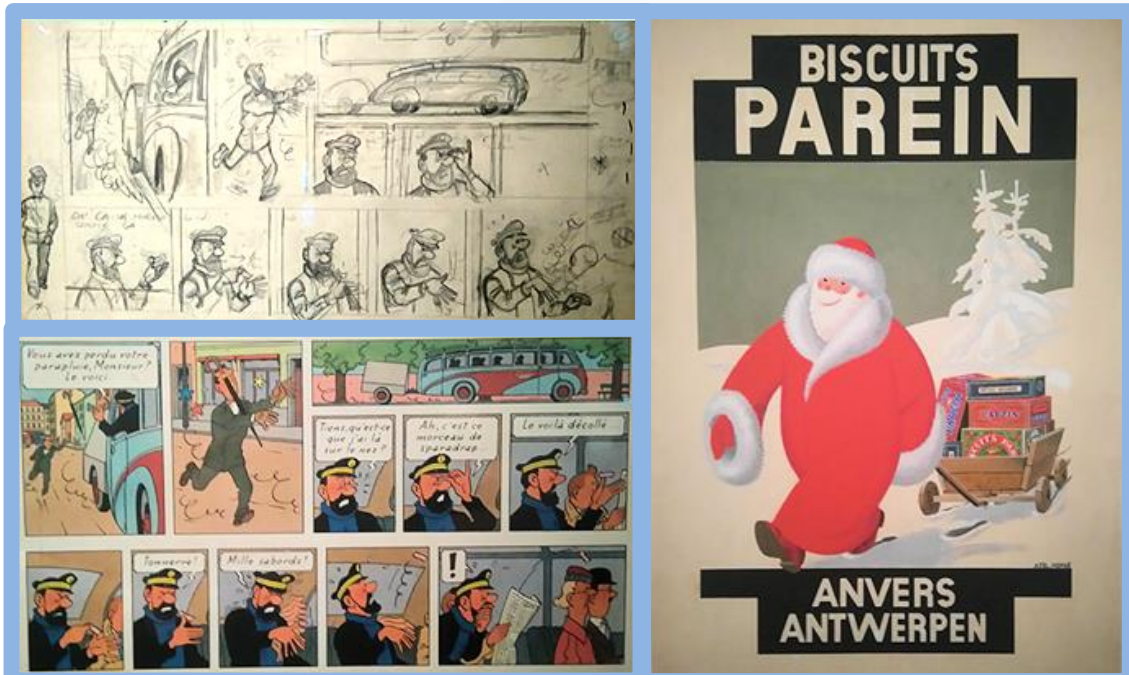


Matisse: La desserte

Back to Paris — *Cont.*

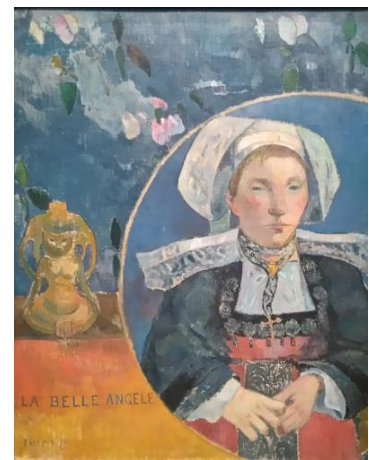
The George Pompidou Centre (www.centrepompidou.fr/en) has until 23 January 2017 a Magritte exhibition. The range of works is impressive, however the erudite discussion about the choice of titles appears to ignore Magritte's refusal to provide titles, suggesting that we should draw our own conclusions. There are some good examples of words that do not match the picture and it is good to note that "This is still not a Pipe". The Centre is another interesting modernist structure that was featured in the recent exhibition at the V&A about the work of Ove Arup.

The Grand Palais (www.grandpalais.fr/en) has until 15 January 2017 a very detailed exhibition on Hergé that reveals his early exposure to art, his knowledge of Japanese art, his advertising work as well as the development of Tintin. There is much to learn about the technique behind the printing of the comic strip. Another hefty catalogue is available, as well as all the Tintin stories (in French).



The Musée d'Orsay (www.musee-orsay.fr/en/home.html) which, like Tate Modern, is a new use for an old space is currently undergoing a reorganisation, so much of the space is closed. There is a very interesting and packed exhibition of the Second Empire (until 15 January 2017) that will introduce you to the Napoleonic "Realm" with discussion about the destruction of part of the Louvre Palace by the communards and the fascination with Marie Antoinette. This was a period of great industrial progress and the Universal Exhibition of 1867. The young, cosmopolitan court championed the luxury goods industry and helped to make Paris the entertainment capital of Europe.

The collection of French Impressionists is open as usual, for example Gauguin: *La belle Angèle*



Musée Marmottan Monet (www.marmottan.fr/) is delightfully situated and includes the Monet bequest. The current exhibition features Hodler, Monet & Munch with the tenuous link that they all visited mountains using the new railways to allow them to paint the view in differing lights.

The Society Christmas Lunch

Saturday 3rd December 2016

Once again the Chateau Restaurant did us proud with a splendid choice meal and as far as I have been able to find out thoroughly enjoyed by everyone present. 57 members and guests had originally booked to attend but in the end 54 sat down to lunch. Pat Tucker got her long awaited knee replacement operation the day before and we are glad to hear it was successful. Stuart Eggleton had an unfortunate accident, slipping on ice and doing his best to alter his appearance and lastly one other member who will remain anonymous totally forgetting the correct day and so missed out by not turning up.



Once again I tried to keep all present awake by telling what I hoped were a few amusing stories. Got a few laughs so some enjoyed them or perhaps they were just being polite. Once again Santa's post box was overflowing with your cards going to your fellow artists ably distributed by your hard working Committee. Just a reminder you should only bring cards for those at the lunch. Once again we have had to post quite a few. Names of all those attending were

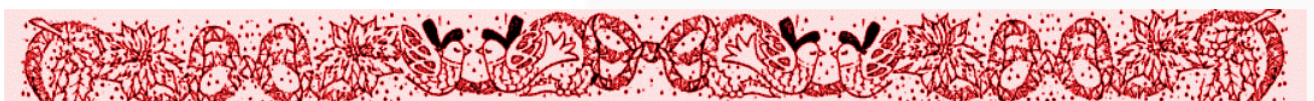
on the table seating plan or are available in advance from the organisers so please give it a thought for the future.

By popular demand you agreed we should book for next year and this has been done so please put it in your diaries Saturday 9th December 2017 – same venue. Please note this is one week later.



May I wish you all a very Happy Christmas and a Healthy, Prosperous and Good Painting New Year.

Archie Niven



FACEBOOK : The Croydon Art Society

The Croydon Art Society is on Facebook!



We have created our new Facebook 'Page' as an extension to our well-attended, regular meetings. Now we can enjoy our art discussions and interests online – any time and any day of the week!

SIMPLE FACTS:

What is Facebook? An online social networking website.

Who can use it? Anyone with a Facebook account.

What is our Page called? The Croydon Art Society.

How do we find it quickly? Search using the hashtag *#thecroydonartsociety*.

Why visit our Page? It is a great place to share and discover websites, workshops and art news!

For anyone already familiar with Facebook, we hope you come and say hello – and give us your support! You can share your own artwork and news directly to **The Croydon Art Society** Facebook Page - and help build an engaging online community for our members and friends of The Society.

Art-related matter you can share include :

- website links
- workshops
- exhibition news
- galleries
- online art tutorials
- art appreciation
- your paintings
- the list is endless!



If you do not have a Facebook account but you would like more information, or perhaps have something in mind that you think might be worth sharing to The Croydon Art Society Facebook Page (including any of the above), please contact Claire at : thecroydonartsociety@gmail.com or speak with her at one of the meetings.

The Croydon Art Society Facebook Page is in its early stages – we will also have a 'Facebook Group' for even greater discussions about art - we will keep you informed!



On a Lighter Note

This persuasive advertisement appeared in 1904, the year when amongst other things the US Army engineers began work on the Panama Canal, the first aeroplane flight to last more than 5 minutes took place and when the first main line electric train appeared in the UK (Liverpool to Southport). I wonder if this contraption was ac or dc; it certainly sounds more likely to kill than to cure.

DR. McLAUGHLIN'S ELECTRIC BELT

is the only true remedy for Weakness and Waste of Power in Men and Women. It is the only Natural Cure for Lost Vitality, Varicocele, Weak Back, Indigestion, Rheumatism, Sciatica, Lumbago, Sprains or Aches of the body or limbs, Insomnia, Diabetes, Diseases of the Skin and Blood, and all Liver, Kidney and Stomach Troubles. Nothing has ever given such remarkable results to suffering humanity. It is curing hundreds of men and women daily. Send to those who are cured; they will tell you. We can supply you with names of thousands of people cured in Australasia alone.

Do it Now ! Try Electricity and You Won't Regret It !

Not to rush down to your GP because I'm guessing this treatment is not available on the NHS

WEBSITE AND BOOK OF ARTISTS

There are still a great many members, new and old, who do not have an entry on the Society's website or in the Book of Artists which is on display at every exhibition. We have now completed giving our website a brand new look and feel, so now is a great time to get your name and a few of your pictures added.

At present this is FREE to all members so why not take advantage while it still is.

For details refer to our webmaster Raymond Ore ray@raymondore.co.uk

Get in touch

Contribute to future editions of the newsletter by sending your News/Exhibitions reports and any items of interest.

Please let the Editor, Phil Sadler have your contributions

Deadline: 1st April 2017

email : p.sadler3@ntlworld.com

15, Albury Road, Merstham, Redhill Surrey RH1 3LP